

# Enterprise Reporter for Active Directory

Active Directory and Azure Active Directory discovery and reporting across the enterprise

Microsoft Active Directory (AD) administrators today have a broad range of responsibilities, including supporting directory migrations, achieving and maintaining IT compliance, investigating security incidents, and maintaining proper separation of duties (SoD) — all with limited staff and budget. As organizations move to cloud and hybrid infrastructures, the job becomes even more challenging, since their Active Directory footprint expands as they have to also manage and secure Azure AD.

At any time, administrators need to be able to answer questions like the following:

- Who can do what in my Active Directory and Azure Active Directory?
- What users, groups and roles exist in my on-premises and cloud environments?
- Which user accounts can be safely deleted before migrating to a new domain?
- How has group membership changed over time for AD domain local and global groups?

## BENEFITS:

- Delivers automated discovery and reporting on the configuration of Active Directory and Azure AD
- Enhances security and compliance by increasing visibility into Active Directory and Azure AD
- Provides pre-migration analysis to facilitate a smooth domain migration or consolidation project
- Facilitates AD historical analysis and compliance reporting by capturing the historical configuration of Active Directory and providing detailed change history reports
- Is scalable, secure and customizable to support large and complex Microsoft Windows environments with multiple groups of report consumers

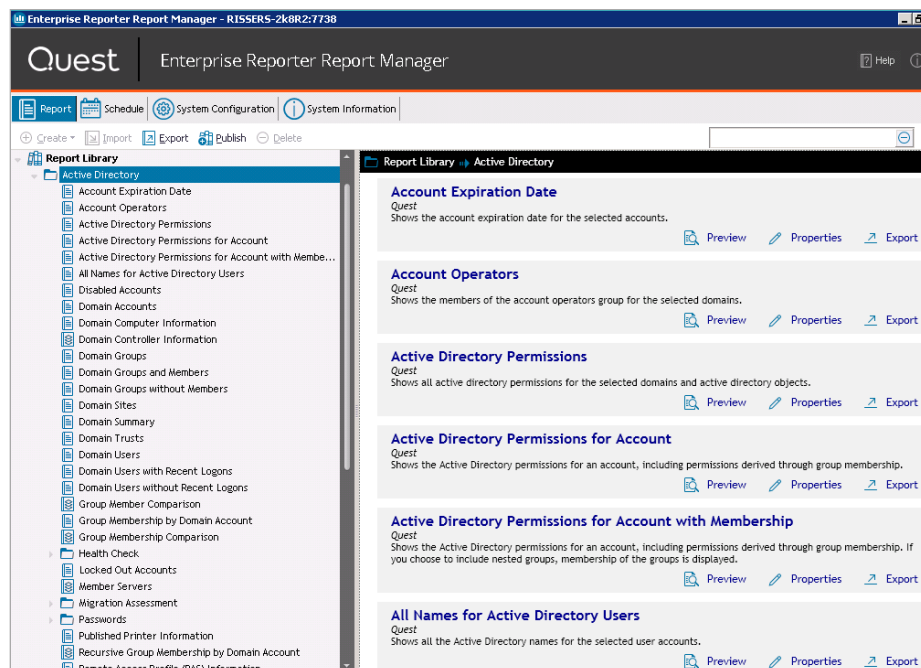


Figure 1: Enterprise Reporter for Active Directory reports on users, groups, group memberships, permissions and other critical objects residing in domains, forests and tenants.

## SYSTEM REQUIREMENTS

For a complete list of system requirements, see the [Release Notes](#).

### BUILT-IN REPORTS BY CATEGORY

#### Health Check:

Active Directory Summary  
Disabled Accounts  
Locked out Accounts  
Information for Users, Groups, Domains and more

#### Azure Active Directory:

Azure Tenant Information  
Application Service Principals  
Identities Membership and Roles  
Azure Users, Roles, Groups, and Members  
Users Connected with On-Premises AD

#### Migration Assessment:

Duplicate Domain (Computers, Groups, Users)  
Matching (Computers, Groups, Users)

#### Passwords:

Changed/Expired/Older Passwords  
Last Password Changed

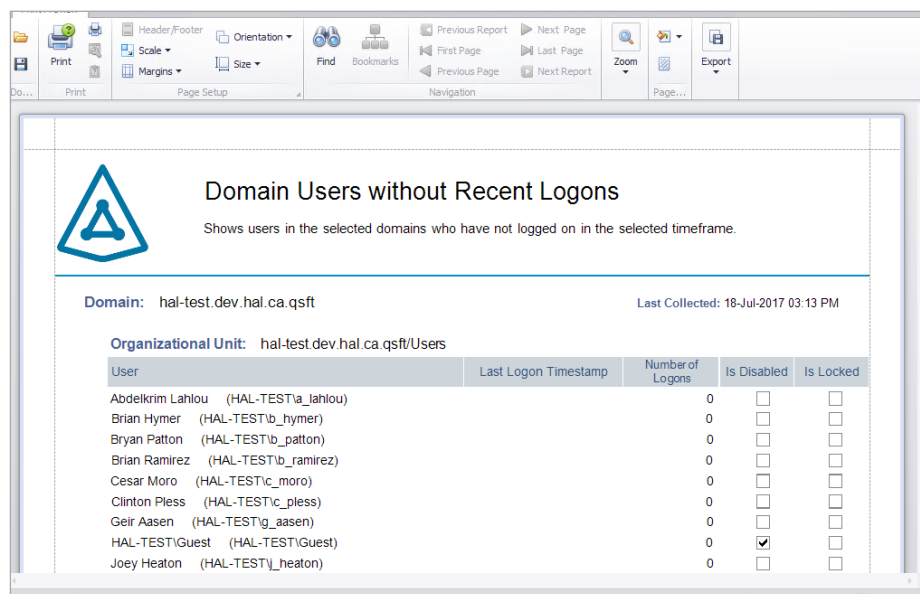
#### Other:

Active Directory Permissions  
Information for Users, Groups, Domains and more  
Domain Information (accounts, computer, controller, groups and members)  
Domain Users without Recent Logons  
Group Membership Comparison

Enterprise Reporter for Active Directory provides deep visibility into AD users, groups, roles, organizational units (OUs) and permissions — as well as Azure AD users, groups, roles and application service principals. Armed with this information, organizations can perform security assessments, configuration change history reviews, and pre- and post-migration analyses, thereby enabling more informed strategic planning and proactive management of the entire IT infrastructure.

## FEATURES

- **Security and compliance visibility** — Gain visibility into the configuration of critical IT assets in both AD domains and Azure AD tenants. Comprehensive reports provide the insight necessary to ensure security and compliance with internal policies and external regulations.
- **Improved insights with IT Security Search** — Correlate disparate IT data from numerous systems and devices into an interactive search engine for fast security incident response and forensic analysis. Include user entitlements and activity, event trends, suspicious patterns and more with rich visualizations and event timelines.
- **Pre-migration assessment** — Plan for a smooth domain migration or consolidation project by pinpointing user and group dependencies, matching conflicts, and unused accounts before the migration starts.
- **Delegated rights reporting** — Ensure appropriate AD and Azure AD delegation by reporting on who has access to AD domains and OUs, users, groups and computers, as well as Azure AD users, groups, roles, applications and permissions.
- **AD change history** — Capture historical configuration information on AD users, groups, OUs and permissions, and view detailed change history reports. Gain in-depth insight for historical analysis and compliance reporting.
- **Scalable data collection** — Scale to AD environments of any size and geographic distribution. Schedule collections during off-peak hours to minimize the impact of data collection on network and server performance, and leverage the distributed collection architecture for load balancing.
- **Efficient storage** — Reduce database storage requirements and save more change history data by comparing AD domain discoveries and storing only the changes.



User	Last Logon Timestamp	Number of Logons	Is Disabled	Is Locked
Abdelkrim Lahlou (HAL-TEST\la_hlou)		0	<input type="checkbox"/>	<input type="checkbox"/>
Brian Hymer (HAL-TEST\b_hymer)		0	<input type="checkbox"/>	<input type="checkbox"/>
Bryan Patton (HAL-TEST\b_patton)		0	<input type="checkbox"/>	<input type="checkbox"/>
Brian Ramirez (HAL-TEST\b_ramirez)		0	<input type="checkbox"/>	<input type="checkbox"/>
Cesar Moro (HAL-TEST\c_moro)		0	<input type="checkbox"/>	<input type="checkbox"/>
Clinton Pless (HAL-TEST\c_pless)		0	<input type="checkbox"/>	<input type="checkbox"/>
Geir Aasen (HAL-TEST\g_aasen)		0	<input type="checkbox"/>	<input type="checkbox"/>
HAL-TEST\Guest (HAL-TEST\Guest)		0	<input checked="" type="checkbox"/>	<input type="checkbox"/>
Joey Heaton (HAL-TEST\j_heaton)		0	<input type="checkbox"/>	<input type="checkbox"/>

Figure 2: Enterprise Reporter for Active Directory can detect stale AD user accounts that have not recently logged on.

50 percent of surveyed IT organizations purchased Enterprise Reporter to solve Active Directory pre-migration planning and post migration analysis.

Source: TechValidate. TVID: 612-057-336

- **Automated reporting workflows** — Ensure stakeholders get the reports they need, when they need them, with automated report generation and flexible scheduling of report delivery.
- **SoD** — Honor departmental and business function boundaries by enabling auditors, help desk staff, IT managers and other stakeholders to get exactly the reports they need and nothing more.
- **Customizable reports** — Perform effective data analysis that meets the unique informational needs of your organization using predefined reports or creating new reports. Customize with advanced filtering and export multiple formats, including PDF, HTML, MHT, RTF, XLS, XLSX, CSV, text and images.
- **Common reporting portal** — Export reports to our software knowledge portal for a unified reporting interface across the entire family of Quest security and compliance solutions.

## ABOUT MERGER IT

Merger IT helps customers with solutions to assisting their organisations, providing the innovation of products which will enhance M&A activities delivery, and provide outcomes, through tried and tested toolsets and processes.

This ensures customers' requirements and outcomes are expedited leveraging the experience provided by Merger IT.